



therma*line*

ProThermetic - Boiling, Braising and Pressure Braising Pans
Accessories



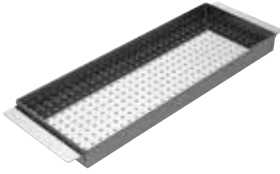
Electrolux

Index

Strainers for dumplings	4
Base plates	7
Baskets	8
Suspension frames and GN containers	9
False bottoms	10
Shovel & scrapers	11
Water mixing taps	12
Automatic water fillings & Spray gun	14
Food tap	15
Drain stand pipes	16
Rear closing kits	17
Lower back panels	20
C-Boards (Backsplash)	22
Stirrers	23
Measuring rods	25
Food tap strainers	26
Additional factory fitted accessories	27
Stainless steel plinths	30
Bottom plates with feet	35
Installation accessories	37
End rails & side panels	38
Connection kits	44

Strainers for dumplings

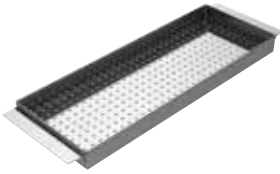
Strainer for dumplings



Range	Stationary Round Boiling Pans		
Appliance typology	60 Lt	100 Lt	150 Lt
Size WxDxH	484x220x60 mm	610x220x60 mm	750x220x60 mm
PNC	910051	910053	910055
Material	Stainless Steel AISI 304 - DIN 1.4301		

- Diameter of the holes Ø10mm

Strainer for dumplings



Range	Stationary Rectangular Boiling Pans			
Appliance typology	80 Lt	200 Lt	300 Lt	400 Lt
Size WxDxH	610x220x60 mm	610x220x60 mm	610x220x60 mm	610x220x60 mm
PNC	910053	910053	910053	910053
Material	Stainless Steel AISI 304 - DIN 1.4301			

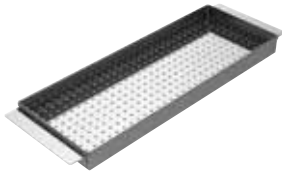
- Diameter of the holes Ø10mm

Strainer for dumplings



Range	Stationary Braising and Pressure Braising Pans
Appliance typology	All models
Size WxDxH	610x220x60 mm
PNC	910053
Material	Stainless Steel AISI 304 - DIN 1.4301

- Diameter of the holes Ø10mm



Strainer for dumplings

Range	Tilting Boiling Pans		
Appliance typology	60 Lt	100 Lt	150 Lt
Size WxDxH	545x220x60 mm	675x220x60 mm	750x220x60 mm
PNC	910052	910054	910055
Material	Stainless Steel AISI 304 - DIN 1.4301		

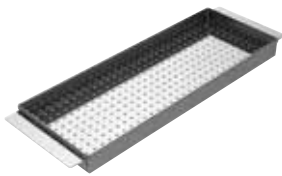
- Diameter of the holes Ø10mm



Strainer for dumplings

Range	Tilting Boiling Pans			
Appliance typology	200Lt	300 Lt	400 Lt	500 Lt
Size WxDxH	830x460x45 mm	932x220x60 mm	932x220x60 mm	932x220x60 mm
PNC	910005	910057	910057	910057
Material	Stainless Steel AISI 304 - DIN 1.4301			

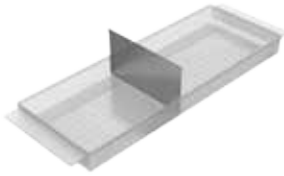
- Diameter of the holes Ø10mm



Strainer for dumplings

Range	Tilting Braising and Pressure Braising Pans
Appliance typology	All models
Size WxDxH	610x220x60 mm
PNC	910053
Material	Stainless Steel AISI 304 - DIN 1.4301

- Diameter of the holes Ø10mm



Scraper for dumplings strainer

Range	All ProThermetic
Appliance typology	For all Strainers
Size WxDxH	214x120x1.5 mm
PNC	910058
Material	Stainless Steel AISI 304 - DIN 1.4301

Base plates

Base plate for boiling pans



Range	Stationary Boiling Pans		
Appliance typology	60 Lt	100 Lt	150 Lt
Size WxDxH	453x453x25 mm	567x567x25 mm	698x698x25 mm
PNC	910030	910032	910034
Material	Stainless Steel AISI 304 - DIN 1.4301		

Base plate for boiling pans



Range	Tilting Boiling Pans		
Appliance typology	60 Lt	100 Lt	150 Lt
Size WxDxH	507x507x25 mm	628x628x25 mm	698x698x25 mm
PNC	910031	910033	910034
Material	Stainless Steel AISI 304 - DIN 1.4301		

Base plate for boiling pans



Range	Tilting Boiling Pans	
Appliance typology	200Lt	300/400/500 Lt
Size WxDxH	788x788x25 mm	888x888x25 mm
PNC	910035	910036
Material	Stainless Steel AISI 304 - DIN 1.4301	

Baskets

Basket for boiling pans



Range	Stationary Boiling Pans		
Appliance typology	60 Lt	100 Lt	150 Lt
Size WxDxH	425x425x100 mm	540x540x100 mm	670x670x100 mm
PNC	910020	910022	910024
Material	Stainless Steel AISI 304 - DIN 1.4301		

- Diameter of the holes 8mm

Basket for boiling pans

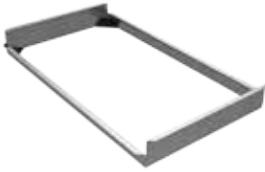


Range	Tilting Boiling Pans			
Appliance typology	60 Lt	100 Lt	150 Lt	200Lt
Size WxDxH	480x480x100 mm	600x600x100 mm	670x670x100 mm	760x760x100 mm
PNC	910021	910023	910024	910025
Material	Stainless Steel AISI 304 - DIN 1.4301			

- Diameter of the holes 8mm

Suspension frames and GN containers

Suspension frame GN 1/1



Range	Tilting Pressure Braising Pans	Tilting Braising Pans
Appliance typology	60/90 Lt - 2 pcs 100/170 Lt - 3 pcs	60/90 Lt - 2 pcs 100/170 Lt - 3 pcs
PNC	910191	912709
Material	Stainless Steel AISI 304 - DIN 1.4301	

- The suspension frame is needed in order to accommodate GN 1/1 containers inside the cooking vessel.
- According to the capacity of the cooking vessel, the optimal number of pieces is showed.

Suspension frame GN 1/1



Range	Stationary Braising Pans and Pressure Braising Pans	Stationary Pressure Boiling Pans	Stationary Rectangular Boiling Pans
Appliance typology	80/110 Lt - 2 pcs 120/170 Lt - 3 pcs	200 Lt - 2 pcs 300 Lt - 3 pcs	80 Lt - 1 pcs 200 Lt - 2 pcs 300 Lt - 3 pcs 400 Lt - 4 pcs
PNC	910191	910191	910191
Material	Stainless Steel AISI 304 - DIN 1.4301		

- The suspension frame is needed in order to accommodate GN 1/1 containers inside the cooking vessel.
- According to the capacity of the cooking vessel, the optimal number of pieces is showed.

Perforated GN 1/1 containers with handles



Range	Braising and Pressure Braising Pan Pans		
Height	100mm	150mm	200mm
PNC	910211	910212	910213
Material	Stainless Steel AISI 304 - DIN 1.4301		

- Suspension frame required.

False bottoms

False bottom GN 1/1



Range	Tilting Braising and Pressure Braising Pans	Stationary Braising Pans and Pressure Braising Pans
Appliance typology	60/90 Lt - 2 pcs 100/170 Lt - 3 pcs	80/110 Lt - 2 pcs 125/170 Lt - 3 pcs
Size WxDxH	535x335x30 mm	535x335x30 mm
PNC	910201	910201
Material	Stainless Steel AISI 304 - DIN 1.4301	

- According to the capacity of the cooking vessel, the optimal number of pieces is showed.

False bottom for rectangular boiling pans



Range	Stationary Rectangular Boiling Pans and Pressure			
Appliance typology	80 Lt	200 Lt	300 Lt	400 Lt
Size WxDxH	550x350x70 mm	550x680x70 mm	550x1040x70 mm	550x1380x70 mm
PNC	910181	910182	910183	910184
Material	Stainless Steel AISI 304 - DIN 1.4301			

Shovel & scrapers

Shovel



Range	Braising and Pressure Braising Pans	
Type	Perforated	Not Perforated
Size WxDxH	150x350x170 mm	150x350x170 mm
PNC	911577	911578
Material	Stainless Steel AISI 304 - DIN 1.4301	

Scraper

911579



913431



913432



Range	Braising and Pressure Braising Pans		
Type	With horizontal handle	Without handle	With vertical handle
Size WxDxH	200x135x125 mm	545x4x150 mm	545x4x600 mm
PNC	911579	913431	913432
Material	Stainless Steel AISI 304 - DIN 1.4301		

Water mixing taps

912790



Manual water mixing tap KWC

Range	All Tilting, factory fitted		All Stationary, factory fitted. Upgrade from standard Klarco.	
Type	with knobs	with lever	with knobs	with lever
Size WxDxH	300x150x600 mm		300x150x450 mm	300x50x450 mm
PNC	581911	912790	913564	913563

- ▶ Installed on the left side on tilting.
- ▶ Installed on the right side on stationary.
- ▶ On tilting, one mixing tap can serve two appliances.
- ▶ Drip-stop not included on mixing tap with lever.
- ▶ Klarco is standard on stationary.



Drip stop for KWC mixing tap with lever

PNC	911933
-----	--------

- ▶ The drip-stop prevents any drip of the residual water from the spout.
- ▶ Mixing tap with knobs have the drip stop as standard.

913556



Manual water mixing tap Klarco

Range	Tilting Braising Pans and Boiling Pans, factory fitted			
Type	with knobs			
Size WxDxH	350x150x600 mm	350x150x450 mm	220x150x600 mm	220x150x450 mm
PNC	913554	913555	913556	913557

- ▶ Installed on the left side.
- ▶ One mixing tap can serve two appliances.
- ▶ Drip-stop included.

913560



Manual water mixing tap Klarco

Range	Tilting Braising Pans and Boiling Pans, factory fitted			
Type	with lever			
Size WxDxH	350x50x600 mm	350x50x450 mm	220x50x600 mm	220x50x450 mm
PNC	913558	913559	913560	913561

- Installed on the left side.
- One mixing tap can serve two appliances.
- Drip-stop included.

913562



Manual water mixing tap Klarco

Range	Tilting Pressure Braising Pans, factory fitted	All Stationary, factory fitted	
Type	with knobs	with lever	with lever, instead of standard knobs
Size WxD	220x150x600 mm	220x50x600 mm	300x50x450 mm
PNC	913565	913566	913562

- Installed on the left side.
- One mixing tap can serve two appliances.
- Drip-stop included.

Automatic water fillings & Spray gun



Automatic water filling

Range	All Tilting, factory fitted	
Type	cold water	cold and hot water
PNC	912733	912735

- Tilting appliances require a mixing tap to be ordered separately.
- Operated with the touch control. Quantity with 1 liter step.



Automatic water filling

Range	Stationary, factory fitted. Up to width 1300mm.		Stationary, factory fitted. Width 1400-1700mm.
PNC	cold water	cold and hot water	cold water
Material	912734	912736	912797

- Tilting appliances require a mixing tap to be ordered separately.
- Operated with the touch control. Quantity with 1 liter step.



Spray gun for tilting

Range	All tilting, factory fitted		
Height	800mm	700mm	400mm
PNC	912777	912776	912775

- Installed on the left side.
- One spray gun can serve more appliances.

Food tap

912780



Food tap 2" Echtermann for tilting

Range	Tilting Braising and Pressure Braising Pans, factory fitted	Tilting Boiling Pans, factory fitted
PNC	912780	912779

- It allows to drain liquids without tilting the cooking vessel.

Drain stand pipes



Drain stand pipe

Range	Stationary Round Boiling Pans	
Appliance typology	60 Lt	100/150 Lt
PNC	913426	913427
Material	Stainless Steel AISI 304 - DIN 1.4301	

- Placed under the food tap avoids water splashes on the floor.



Drain stand pipe

Range	Stationary Rectangular Boiling Pans	
Appliance typology	80 Lt	200/300/400 Lt
PNC	913428	913429
Material	Stainless Steel AISI 304 - DIN 1.4301	

- Placed under the food tap avoids water splashes on the floor.



Drain stand pipe

Range	Stationary Braising Pans	
Appliance typology	80/125 Lt	110/170 Lt
PNC	913430	913478
Material	Stainless Steel AISI 304 - DIN 1.4301	

- Placed under the food tap avoids water splashes on the floor.

Rear closing kits

Rear closing kit - Tilting Appliances without backsplash



Range	All Tilting, factory fitted			
Width	1100mm		1200mm	
Height	700	800	700	800
PNC	912743	912755	912744	912756
Material	Stainless Steel AISI 304 - DIN 1.4301			

- Tilting range is supplied without rear closing kit. The back side is open. For island installation the rear closing kit is mandatory.
- For against the wall installation is recommended for water proof.

Rear closing kit - Tilting Appliances without backsplash



Range	All Tilting, factory fitted			
Width	1300mm		1400mm	
Height	700	800	700	800
PNC	912745	912757	912746	912758
Material	Stainless Steel AISI 304 - DIN 1.4301			

- Tilting range is supplied without rear closing kit. The back side is open. For island installation the rear closing kit is mandatory.
- For against the wall installation is recommended for water proof.

Rear closing kit - Tilting Appliances without backsplash



Range	All Tilting, factory fitted			
Width	1500mm		1600mm	
Height	700	800	700	800
PNC	912747	912759	912748	912760
Material	Stainless Steel AISI 304 - DIN 1.4301			

- Tilting range is supplied without rear closing kit. The back side is open. For island installation the rear closing kit is mandatory.
- For against the wall installation is recommended for water proof.

Rear closing kit - Tilting Appliances with backsplash



Range	All Tilting, factory fitted			
Width	1100mm		1200mm	
Height	700	800	700	800
PNC	912703	912749	912704	912750
Material	Stainless Steel AISI 304 - DIN 1.4301			

- Tilting range is supplied without rear closing kit. The back side is open. For island installation the rear closing kit is mandatory.
- For against the wall installation is recommended for water proof.

Rear closing kit - Tilting Appliances with backsplash



Range	All Tilting, factory fitted			
Width	1300mm		1400mm	
Height	700	800	700	800
PNC	912705	912751	912706	912752
Material	Stainless Steel AISI 304 - DIN 1.4301			

- Tilting range is supplied without rear closing kit. The back side is open. For island installation the rear closing kit is mandatory.
- For against the wall installation is recommended for water proof.

Rear closing kit - Tilting Appliances with backsplash



Range	All Tilting, factory fitted			
Width	1500mm		1600mm	
Height	700	800	700	800
PNC	912707	912753	912708	912754
Material	Stainless Steel AISI 304 - DIN 1.4301			

- Tilting range is supplied without rear closing kit. The back side is open. For island installation the rear closing kit is mandatory.
- For against the wall installation is recommended for water proof.



Rear closing kit - Stationary Appliances with back splash

Range	All Stationary, factory fitted			
Width	700mm		800mm	
Height	700	800	700	800
PNC	912799	912994	912989	912995
Material	Stainless Steel AISI 304 - DIN 1.4301			

- Stationary appliances with back splash are supplied without rear closing kit.
- The back side is open.
- Stationary appliances without back splash have the rear closing kit as standard.
Recommended for water proof.



Rear closing kit - Stationary Appliances with back splash

Range	All Stationary, factory fitted			
Width	900mm		1000mm	
Height	700	800	700	800
PNC	912990	912996	912991	912997
Material	Stainless Steel AISI 304 - DIN 1.4301			

- Stationary appliances with back splash are supplied without rear closing kit.
- The back side is open.
- Stationary appliances without back splash have the rear closing kit as standard.
Recommended for water proof.



Rear closing kit - Stationary Appliances without back splash

Range	All Stationary, factory fitted			
Width	1400mm		1700mm	
Height	700	800	700	800
PNC	912992	912998	912993	912999
Material	Stainless Steel AISI 304 - DIN 1.4301			

- Tilting range is supplied without rear closing kit. The back side is open.
For island installation the rear closing kit is mandatory.
- For against the wall installation is recommended for water proof.

Lower back panels

Lower Back Panel - Appliances without backsplash



Range	All Tilting, factory fitted	
Width	1100mm	1200mm
PNC	912767	912768
Material	Stainless Steel AISI 304 - DIN 1.4301	

- Height (800mm or 700mm) to be defined by customer.

Lower Back Panel - Appliances without backsplash



Range	All Tilting, factory fitted	
Width	1300mm	1400mm
PNC	912769	912770
Material	Stainless Steel AISI 304 - DIN 1.4301	

- Height (800mm or 700mm) to be defined by customer.

Lower Back Panel - Appliances without backsplash



Range	All Tilting, factory fitted	
Width	1500mm	1600mm
PNC	912771	912772
Material	Stainless Steel AISI 304 - DIN 1.4301	

- Height (800mm or 700mm) to be defined by customer.

Lower Back Panel - Appliances with backsplash



Range	All Tilting, factory fitted	
Width	1100mm	1200mm
PNC	912761	912762
Material	Stainless Steel AISI 304 - DIN 1.4301	

- Height (800mm or 700mm) to be defined by customer.

Lower Back Panel - Appliances with backsplash



Range	All Tilting, factory fitted	
Width	1300mm	1400mm
PNC	912763	912764
Material	Stainless Steel AISI 304 - DIN 1.4301	

- Height (800mm or 700mm) to be defined by customer.

Lower Back Panel - Appliances with backsplash



Range	All Tilting, factory fitted	
Width	1500mm	1600mm
PNC	912765	912766
Material	Stainless Steel AISI 304 - DIN 1.4301	

- Height (800mm or 700mm) to be defined by customer.

C-Boards (Backsplash)

C-Board Tilting



Range	All Tilting, factory fitted	
Width	1100mm	1200mm
PNC	912183	912184
Material	Stainless Steel AISI 304 - DIN 1.4301	

- Bended in one piece with the worktop, 40mm high.

C-Board Tilting



Range	All Tilting, factory fitted	
Width	1300mm	1400mm
PNC	912185	912186
Material	Stainless Steel AISI 304 - DIN 1.4301	

- Bended in one piece with the worktop, 40mm high.

C-Board Tilting



Range	All Tilting, factory fitted	
Width	1500mm	1600mm
PNC	912187	912188
Material	Stainless Steel AISI 304 - DIN 1.4301	

- Bended in one piece with the worktop, 40mm high.

Stirrers



Stirrer with scraper

Range	Tilting, electric and steam powered		
Appliance typology	60 Lt	100 Lt	150 Lt
PNC	910091	910093	910094
Material	Stainless Steel AISI 304 - DIN 1.4301		

- The Stirrer is not included with the boiling pan, must be ordered separately.



Stirrer with scraper

Range	Tilting, electric and steam powered			
Appliance typology	200 Lt	300 Lt	400 Lt	500 Lt
PNC	910095	910096	910097	
Material	Stainless Steel AISI 304 - DIN 1.4301			

- The Stirrer is not included with the boiling pan, must be ordered separately.



Stirrer without scraper

Range	Tilting, electric and steam powered		
Appliance typology	60 Lt	100 Lt	150 Lt
PNC	910061	910063	910064
Material	Stainless Steel AISI 304 - Din 1.4301		

- The Stirrer is not included with the boiling pan, must be ordered separately.



Stirrer without scraper

Range	Tilting, electric and steam powered			
Appliance typology	200 Lt	300 Lt	400 Lt	500 Lt
PNC	910065	910066	910067	
Material	Stainless Steel AISI 304 - Din 1.4301			

- The Stirrer is not included with the boiling pan, must be ordered separately.



Stirrer with scraper

Range	Stationary		
Appliance typology	60 Lt	100 Lt	150 Lt
PNC	912729	912730	912731
Material	Stainless Steel AISI 304 - Din 1.4301		

- The Stirrer is not included with the boiling pan, must be ordered separately.



Stirrer without scraper

Range	Stationary		
Appliance typology	60 Lt	100 Lt	150 Lt
PNC	912726	912727	912728
Material	Stainless Steel AISI 304 - DIN 1.4301		

- The Stirrer is not included with the boiling pan, must be ordered separately.

Measuring rods



Measuring rod

Range	Stationary		
Appliance typology	60 Lt	100 Lt	150 Lt
PNC	912723	912724	912725
Material	Stainless Steel AISI 304 - DIN 1.4301		



Measuring rod with strainer

Range	Stationary rectangular boiling pans and pressure boiling pans			
Appliance typology	80 Lt	200 Lt	300 Lt	400 Lt
PNC	912480	912481	912482	912483
Material	Stainless Steel AISI 304 - Din 1.4301			



Measuring rod with strainer

Range	Stationary braising and pressure braising pans			
Appliance typology	80 Lt	110 Lt	125 Lt	170 Lt
PNC	913192	912484	913193	912485
Material	Stainless Steel AISI 304 - Din 1.4301			

Food tap strainers



Food tap strainer

Range	Stationary Round Boiling Pans
PNC	910161
Material	Stainless Steel AISI 304 - Din 1.4301

- › Not compatible with stirrer with scrapers.



Food tap strainer rod

Range	Stationary Round Boiling Pans
PNC	910162
Material	Stainless Steel AISI 304 - Din 1.4301

- › Not compatible with stirrer with scrapers.

Additional factory fitted accessories

Kit energy optimizer / Potential free contact

Range	All ProThermetic, factory fitted
PNC	912737

Power sockets built in

Range	All ProThermetic, factory fitted				
Type	CEE	CEE 32A	Schuko	CH Typ 23	CH Typ 25
Voltage	400	400	230	230	400
Ampere	16	32	16	16	16
IP Rate	IP67	IP67	IP68	IP55	IP55
Picture					
PNC	912468	912469	912470	912471	912472

Power sockets built in

Range	All ProThermetic, factory fitted				
Type	Schuko	CEE	CH Typ 23	Schuko	CH Typ 25
Voltage	230	230	230	230	400
Ampere	16	16	16	16	16
IP Rate	IP55	IP67	IP54	IP54	IP54
Picture					
PNC	912473	912474	912475	912476	912477

Main switch



Range	All ProThermetic, factory fitted		
Ampere	25	25	25
Section	2.5 mm ²	2.5 mm ²	4 mm ²
Type	All Gas	All Steam	Electric PBOT06 PBON06 PFEN08/11 PUEN08/11 PFET06/09 PUET06/09
PNC	912702	912739	912773

Main switch



Range	All ProThermetic, factory fitted		
Ampere	60	60	80
Section	6mm ²	10 mm ²	16 mm ²
Type	Electric PBOT10 PBOT15 PBON10 PBON15 PBEN08 PFEN12/17 PUEN12/17 PFET10/17 PUET10/17	Electric PBOT20 PBOT30 PPEN20 PBEN20 PBEN30	Electric PBOT40/50 PBEN40
PNC	912740	912774	912741

Emergency stop



Range	All ProThermetic, factory fitted
PNC	912784



Core temperature sensor for Pressure Braising Pan

Range	All Tilting, factory fitted	Stationary, factory fitted	Stationary Pressure Boiling Pan, factory fitted
PNC	Specific PNC for versions with sensor	Specific PNC for versions with sensor	912716

- 6 points of measurement.



External touch control device

Range	All Tilting, factory fitted	All Stationary, factory fitted
PNC	912782	912783

- Installed on the right side.



Manometer

Range	Tilting Boiling Pans, factory fitted	Stationary Round Boiling Pans and Rectangular Boiling Pans, factory fitted	Stationary Pressure Boiling Pans
PNC	912490	912120	912492

- Mainly for the Chinese market (Hong Kong).

Stainless steel plinths

Stainless steel plinth Tilting Against the wall installation

800mm
depth

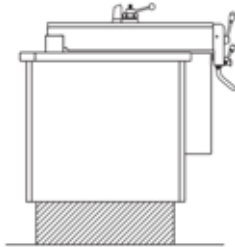


Range	All Tilting, factory fitted	
Depth	800mm	
Height	100mm	200mm
PNC	911432	911439
Material	Stainless Steel AISI 304 - DIN 1.4301	

- Tilting range is supplied without feet or plinths.
- Without feet or plinths can only be installed on concrete.
- Each appliance requires two plinths (quantity 2).

Stainless steel plinth Tilting Island installation

800mm
depth



Range	All Tilting, factory fitted	
Depth	800mm	
Height	100mm	200mm
PNC	911462	911469
Material	Stainless Steel AISI 304 - DIN 1.4301	

- Tilting range is supplied without feet or plinths.
- Without feet or plinths can only be installed on concrete.
- Each appliance requires two plinths (quantity 2).

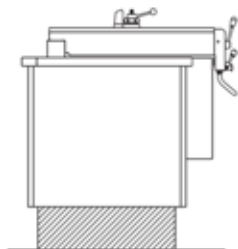
Stainless steel plinth Tilting Against the wall installation

850mm
depth



Range	All Tilting, factory fitted	
Depth	850mm	
Height	200mm	
PNC	912494	
Material	Stainless Steel AISI 304 - DIN 1.4301	

- Tilting range is supplied without feet or plinths.
- Without feet or plinths can only be installed on concrete.
- Each appliance requires two plinths (quantity 2).



Stainless steel plinth Tilting Island installation

↗ 850mm
depth ↙

Range	All Tilting, factory fitted	
Depth	850mm	
Height	200mm	
PNC	912496	
Material	Stainless Steel AISI 304 - DIN 1.4301	

- Tilting range is supplied without feet or plinths.
- Without feet or plinths can only be installed on concrete.
- Each appliance requires two plinths (quantity 2).

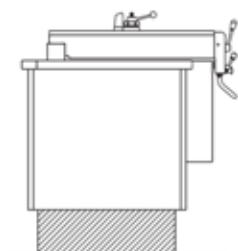


Stainless steel plinth Tilting Against the wall installation

↗ 900mm
depth ↙

Range	All Tilting, factory fitted	
Depth	900mm	
Height	100mm	200mm
PNC	911417	9114125
Material	Stainless Steel AISI 304 - DIN 1.4301	

- Tilting range is supplied without feet or plinths.
- Without feet or plinths can only be installed on concrete.
- Each appliance requires two plinths (quantity 2).



Stainless steel plinth Tilting Island installation

↗ 900mm
depth ↙

Range	All Tilting, factory fitted	
Depth	900mm	
Height	100mm	200mm
PNC	911447	911455
Material	Stainless Steel AISI 304 - DIN 1.4301	

- Tilting range is supplied without feet or plinths.
- Without feet or plinths can only be installed on concrete.
- Each appliance requires two plinths (quantity 2).

Stainless steel plinth Tilting Against the wall installation

 1000mm
depth

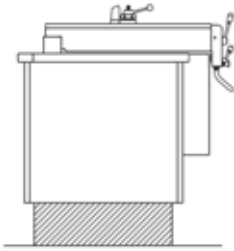


Range	All Tilting, factory fitted	
Depth	1000mm	
Height	100mm	200mm
PNC	911623	911812
Material	Stainless Steel AISI 304 - DIN 1.4301	

- Tilting range is supplied without feet or plinths.
- Without feet or plinths can only be installed on concrete.
- Each appliance requires two plinths (quantity 2).

Stainless steel plinth Tilting Island installation

 1000mm
depth



Range	All Tilting, factory fitted	
Depth	1000mm	
Height	100mm	200mm
PNC	911624	911813
Material	Stainless Steel AISI 304 - DIN 1.4301	

- Tilting range is supplied without feet or plinths.
- Without feet or plinths can only be installed on concrete.
- Each appliance requires two plinths (quantity 2).

Recessed plinth Tilting for DACH



Range	All Tilting, factory fitted
PNC	912479

- Paneling for recessed plinth from 70 to 270 mm mainly ordered from DACH region.

Stainless steel plinth Stationary Island

800mm depth



Range	All Stationary, factory fitted					
Depth	800mm					
Width	700mm	800mm	900mm	1000mm	1400mm	1700mm
Height / PNC	100mm 913336	100mm 913337	100mm 913338	100mm 913339	100mm 913340	100mm 913341
Height / PNC	200mm 913342	200mm 913343	200mm 913344	200mm 913345	200mm 913346	200mm 913347
Material	Stainless Steel AISI 304 - DIN 1.4301					

- Stationary is supplied without feet or plinths.
- Without feet or plinths, appliances can only be installed on concrete.
- Back side open.

Stainless steel plinth Stationary Freestanding

800mm depth



Range	All Stationary, factory fitted					
Depth	800mm					
Width	700mm	800mm	900mm	1000mm	1400mm	1700mm
Height / PNC	100mm 913348	100mm 913349	100mm 913350	100mm 913351	100mm 913352	100mm 913353
Height / PNC	200mm 913354	200mm 913355	200mm 913356	200mm 913357	200mm 913358	200mm 913359
Material	Stainless Steel AISI 304 - DIN 1.4301					

- Stationary is supplied without feet or plinths.
- Without feet or plinths, appliances can only be installed on concrete.
- Back side open.

Stainless steel plinth Stationary Island

850mm depth



Range	All Stationary, factory fitted					
Depth	850mm					
Width	700mm	800mm	900mm	1000mm	1400mm	1700mm
Height / PNC	200mm 913318	200mm 913319	200mm 913320	200mm 913321	200mm 913322	200mm 913323
Material	Stainless Steel AISI 304 - DIN 1.4301					

- Stationary is supplied without feet or plinths.
- Without feet or plinths, appliances can only be installed on concrete.
- Back side open.

Stainless steel plinth Stationary Freestanding

↗ 850mm depth



Range	All Stationary, factory fitted					
Depth	850mm					
Width	700mm	800mm	900mm	1000mm	1400mm	1700mm
Height / PNC	200mm 913330	200mm 913331	200mm 913332	200mm 913333	200mm 913334	200mm 913335
Material	Stainless Steel AISI 304 - DIN 1.4301					

Stainless steel plinth Stationary Island

↗ 900mm depth



Range	All Stationary, factory fitted					
Depth	900mm					
Width	700mm	800mm	900mm	1000mm	1400mm	1700mm
Height / PNC	100mm 913300	100mm 913301	100mm 913302	100mm 913303	100mm 913304	100mm 913305
Height / PNC	200mm 913306	200mm 913307	200mm 913308	200mm 913309	200mm 913310	200mm 913311
Material	Stainless Steel AISI 304 - DIN 1.4301					

- Stationary is supplied without feet or plinths.
- Without feet or plinths, appliances can only be installed on concrete.
- Back side open.

Stainless steel plinth Stationary Freestanding

↗ 900mm depth



Range	All Stationary, factory fitted					
Depth	900mm					
Width	700mm	800mm	900mm	1000mm	1400mm	1700mm
Height / PNC	100mm 912710	100mm 912711	100mm 912712	100mm 912713	100mm 912714	100mm 912715
Height / PNC	200mm 912717	200mm 912718	200mm 912719	200mm 912720	200mm 912721	200mm 912722
Material	Stainless Steel AISI 304 - DIN 1.4301					

Bottom plates with feet

Bottom plate with 2 feet for tilting

800mm
depth



Range	All Tilting, factory fitted	
Depth	800mm	
Height	100mm	200mm
PNC	911479	911476
Material	Stainless Steel AISI 304 - DIN 1.4301	

- Each tilting appliance requires two bottom plates (quantity 2).

Bottom plate with 2 feet for tilting

850mm
depth



Range	All Tilting, factory fitted	
Depth	850mm	
Height	200mm	
PNC	911488	
Material	Stainless Steel AISI 304 - DIN 1.4301	

- Each tilting appliance requires two bottom plates (quantity 2).

Bottom plate with 2 feet for tilting

900mm
depth



Range	All Tilting, factory fitted	
Depth	900mm	
Height	100mm	200mm
PNC	911929	911930
Material	Stainless Steel AISI 304 - DIN 1.4301	

- Each tilting appliance requires two bottom plates (quantity 2).

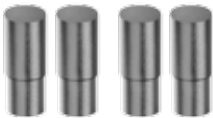


Bottom plate with 2 feet for tilting

1000mm
depth

Range	All Tilting, factory fitted	
Depth	1000mm	
Height	100mm	200mm
PNC	911478	911475
Material	Stainless Steel AISI 304 - DIN 1.4301	

- Each tilting appliance requires two bottom plates (quantity 2).



Set of 4 feet for stationary

Range	All Stationary, factory fitted	
Height	100mm	200mm
PNC	912701	912732
Material	Stainless Steel AISI 304 - DIN 1.4301	

- Each stationary appliance requires one kit of feet (quantity 1).

Installation accessories



Wall mounting kit for stationary

Range	All Stationary		
Width	700mm	800mm	900mm
PNC	912742	912785	912786
Material	Stainless Steel AISI 304 - DIN 1.4301		



Wall mounting kit for stationary

Range	All Stationary		
Width	1000mm	1400mm	1700mm
PNC	912787	912788	912789
Material	Stainless Steel AISI 304 - DIN 1.4301		

End rails & side panels

End rail + side panel flush Stationary appliances without backsplash

800mm depth



Range	All Stationary			
Depth	800mm			
Side	Left		Right	
Height	700mm	800mm	700mm	800mm
PNC	913390	913396	913391	913397
Material	Stainless Steel AISI 304 - DIN 1.4301			

- Kit contains: one adapter rail, one end rail, one side panel, screws.

End rail + side panel flush Stationary appliances with backsplash

800mm depth



Range	All Stationary			
Depth	800mm			
Side	Left		Right	
Height	700mm	800mm	700mm	800mm
PNC	913378	913384	913379	913385
Material	Stainless Steel AISI 304 - DIN 1.4301			

- Kit contains: one adapter rail, one end rail, one side panel, screws.

End rail + side panel 12.5 mm Stationary appliances without backsplash

800mm depth



Range	All Stationary			
Depth	800mm			
Side	Left		Right	
Height	700mm	800mm	700mm	800mm
PNC	913414	913420	913415	913421
Material	Stainless Steel AISI 304 - DIN 1.4301			

- Kit contains: one adapter rail, one end rail, one side panel, screws.



End rail + side panel 12.5 mm Stationary appliances with backsplash

800mm
depth

Range	All Stationary			
Depth	800mm			
Side	Left		Right	
Height	700mm	800mm	700mm	800mm
PNC	913402	913408	913403	913409
Material	Stainless Steel AISI 304 - DIN 1.4301			

- Kit contains: one adapter rail, one end rail, one side panel, screws.



End rail+side panel flush Stationary appliances back to back installation without backsplash

800mm
depth

Range	All Stationary			
Line Depth	800mm			
Side	Left		Right	
Panel Depth	805mm			
Panel Height	700mm	800mm	700mm	800mm
PNC	913479	913485	913480	913486
Material	Stainless Steel AISI 304 - DIN 1.4301			

- Kit contains: one adapter rail, one end rail, one side panel, screws.



End rail+side panel 12.5 mm Stationary appliances back to back installation without backsplash

800mm
depth

Range	All Stationary			
Line Depth	800mm			
Side	Left		Right	
Panel Depth	805mm			
Panel Height	700mm	800mm	700mm	800mm
PNC	913491	913497	913492	913498
Material	Stainless Steel AISI 304 - DIN 1.4301			

- Kit contains: one adapter rail, one end rail, one side panel, screws.



End rail + side panel flush Stationary appliances without backslash

↗ 850mm
depth ↘

Range	All Stationary	
Depth	850mm	
Side	Left	Right
Height	700mm	700mm
PNC	913392	913393
Material	Stainless Steel AISI 304 - DIN 1.4301	

- Kit contains: one adapter rail, one end rail, one side panel, screws.



End rail + side panel flush Stationary appliances with backslash

↗ 850mm
depth ↘

Range	All Stationary	
Depth	850mm	
Side	Left	Right
Height	700mm	700mm
PNC	913380	913381
Material	Stainless Steel AISI 304 - DIN 1.4301	

- Kit contains: one adapter rail, one end rail, one side panel, screws.



End rail + side panel 12.5 mm Stationary appliances without backslash

↗ 850mm
depth ↘

Range	All Stationary	
Depth	850mm	
Side	Left	Right
Height	700mm	700mm
PNC	913416	913417
Material	Stainless Steel AISI 304 - DIN 1.4301	

- Kit contains: one adapter rail, one end rail, one side panel, screws.



End rail + side panel 12.5 mm Stationary appliances with backsplash

↗ 850mm
depth

Range	All Stationary	
Depth	850mm	
Side	Left	Right
Height	700mm	700mm
PNC	913404	913405
Material	Stainless Steel AISI 304 - DIN 1.4301	

- Kit contains: one adapter rail, one end rail, one side panel, screws.



End rail + side panel 12.5 mm Stationary appliances without backsplash

↗ 850mm
depth

Range	All Stationary	
Depth	850mm	
Side	Left	Right
Panel Depth	855mm	
Panel Height	700mm	700mm
PNC	913481	913482
Material	Stainless Steel AISI 304 - DIN 1.4301	

- Kit contains: one adapter rail, one end rail, one side panel, screws.



End rail+side panel 12.5 mm Stationary appliances back to back installation without backsplash

↗ 850mm
depth

Range	All Stationary	
Depth	850mm	
Side	Left	Right
Panel Depth	855mm	
Panel Height	700mm	700mm
PNC	913493	913494
Material	Stainless Steel AISI 304 - DIN 1.4301	

- Kit contains: one adapter rail, one end rail, one side panel, screws.



End rail + side panel flush Stationary appliances without backsplash

900mm
depth

Range	All Stationary			
Depth	900mm			
Side	Left		Right	
Height	700mm	800mm	700mm	800mm
PNC	913394	913400	913395	913401
Material	Stainless Steel AISI 304 - DIN 1.4301			

- Kit contains: one adapter rail, one end rail, one side panel, screws.



End rail + side panel flush Stationary appliances with backsplash

900mm
depth

Range	All Stationary			
Depth	900mm			
Side	Left		Right	
Height	700mm	800mm	700mm	800mm
PNC	913382	913388	913383	913389
Material	Stainless Steel AISI 304 - DIN 1.4301			

- Kit contains: one adapter rail, one end rail, one side panel, screws.



End rail + side panel 12.5 mm Stationary appliances without backsplash

900mm
depth

Range	All Stationary			
Depth	900mm			
Side	Left		Right	
Height	700mm	800mm	700mm	800mm
PNC	913418	913424	913419	913425
Material	Stainless Steel AISI 304 - DIN 1.4301			

- Kit contains: one adapter rail, one end rail, one side panel, screws.



End rail + side panel 12.5 mm Stationary appliances with backsplash

↗ 900mm
depth

Range	All Stationary			
Depth	900mm			
Side	Left		Right	
Height	700mm	800mm	700mm	800mm
PNC	913406	913412	913407	913413
Material	Stainless Steel AISI 304 - DIN 1.4301			

- Kit contains: one adapter rail, one end rail, one side panel, screws.



End rail+side panel flush Stationary appliances back to back installation without backsplash

↗ 900mm
depth

Range	All Stationary			
Depth	900mm			
Side	Left		Right	
Panel Depth	905mm			
Panel Height	700mm	800mm	700mm	800mm
PNC	913483	913489	913484	913490
Material	Stainless Steel AISI 304 - DIN 1.4301			

- Kit contains: one adapter rail, one end rail, one side panel, screws.



End rail+side panel 12.5 mm Stationary appliances back to back installation without backsplash

↗ 900mm
depth

Range	All Stationary			
Depth	900mm			
Side	Left		Right	
Panel Depth	905mm			
Panel Height	700mm	800mm	700mm	800mm
PNC	913495	913501	913496	913502
Material	Stainless Steel AISI 304 - DIN 1.4301			

- Kit contains: one adapter rail, one end rail, one side panel, screws.

Connection kits

912971



Connection kit New Thermaline - Old Thermaline

800mm
depth

Range	All ProThermetic and Modular			
Depth	800mm			
Width	42.5mm			
Side	New thermaline on the Left		New thermaline on the Right	
Backsplash	No	Yes	No	Yes
PNC	912971	912977	912972	912978
Material	Stainless Steel AISI 304 - DIN 1.4301			

- Use this kit to connect:
 - New thermaline TL90, TL85, TL80 and ProThermetic 2.0 to ProThermetic 1.0
 - New thermaline TL90, TL85, TL80 and ProThermetic 2.0 to thermaline Classic C90/C80
- Kit contains: one adapter rail, one connecting rail, screws

912500



Connection kit new modular/tilting/stationary

800mm
depth

Range	All ProThermetic and Modular	
Depth	800mm	
Width	25mm	
Backsplash	No	Yes
PNC	912500	912497
Material	Stainless Steel AISI 304 - DIN 1.4301	

- Kit contains: one adapter rail, one connecting rail, screws.



Connection kit New Thermaline - Old Thermaline



Range	All ProThermetic and Modular			
Depth	850mm			
Width	42.5mm			
Side	New thermaline on the Left		New thermaline on the Right	
Backsplash	No (only ProT.)	Yes	No (only ProT.)	Yes
PNC	912973	912979	912974	912980
Material	Stainless Steel AISI 304 - DIN 1.4301			

- Use this kit to connect:
- New thermaline TL90, TL85, TL80 and ProThermetic 2.0 to ProThermetic 1.0
- New thermaline TL90, TL85, TL80 and ProThermetic 2.0 to thermaline Classic C90/C80
- Kit contains: one adapter rail, one connecting rail, screws



Connection kit new modular/tilting/stationary



Range	All ProThermetic and Modular	
Depth	850mm	
Width	25mm	
Backsplash	No	Yes
PNC	912501	912498
Material	Stainless Steel AISI 304 - DIN 1.4301	

- Kit contains: one adapter rail, one connecting rail, screws.



Connection kit New Thermaline - Old Thermaline

900mm
depth

Range	All ProThermetic and Modular			
Depth	900mm			
Width	New thermaline on the Left	New thermaline on the Right		
Side	42.5mm			
Backsplash	No	Yes	No	Yes
PNC	912975	912981	912976	912982
Material	Stainless Steel AISI 304 - DIN 1.4301			

- Use this kit to connect:
 - New thermaline TL90, TL85, TL80 and ProThermetic 20 to ProThermetic 10
 - New thermaline TL90, TL85, TL80 and ProThermetic 20 to thermaline Classic C90/C80
- Kit contains: one adapter rail, one connecting rail, screws



Connection kit new modular/tilting/stationary

900mm
depth

Range	All ProThermetic and Modular	
Depth	900mm	
Width	25mm	
Backsplash	No	Yes
PNC	912502	912499
Material	Stainless Steel AISI 304 - DIN 1.4301	

- Kit contains: one adapter rail, one connecting rail, screws.

Notes

A series of horizontal dotted lines for writing notes.



Discover the Electrolux Excellence
and share more of our thinking at
www.professional.electrolux.com

Follow us on



Excellence with the environment in mind

- ▶ All our factories are ISO 14001-certified
- ▶ All our solutions are designed for low consumption of water, energy, detergents and harmful emissions
- ▶ In recent years over 70% of our product features have been updated with the environmental needs of our customers in mind
- ▶ Our technology is ROHS and REACH compliant and over 95% recyclable
- ▶ Our products are 100% quality tested by experts

